

Kjellberg[®]
FINSTERWALDE

K 200
JUST CUTTING.



K 200: Just Cutting.

Plasma cutting system with integrated automatic gas control, plasma torch with direct connection and quick-change.

- Simple installation, control and maintenance
- Cutting and gouging



Focus on what matters most

- Optimal and reliable cutting quality
- Easy installation and operation
- Lowest investment and operating costs



Power Source

- Thyristor controlled power source with up to 200 A (100 % duty cycle)
- Plasma gases: O₂, Air, N₂
- RGB LED for status recognition (errors, machine and update status)
- Microprocessor-based sequence control
- Optimised cooling concept for filling and emptying of the unit
- Service-friendly design



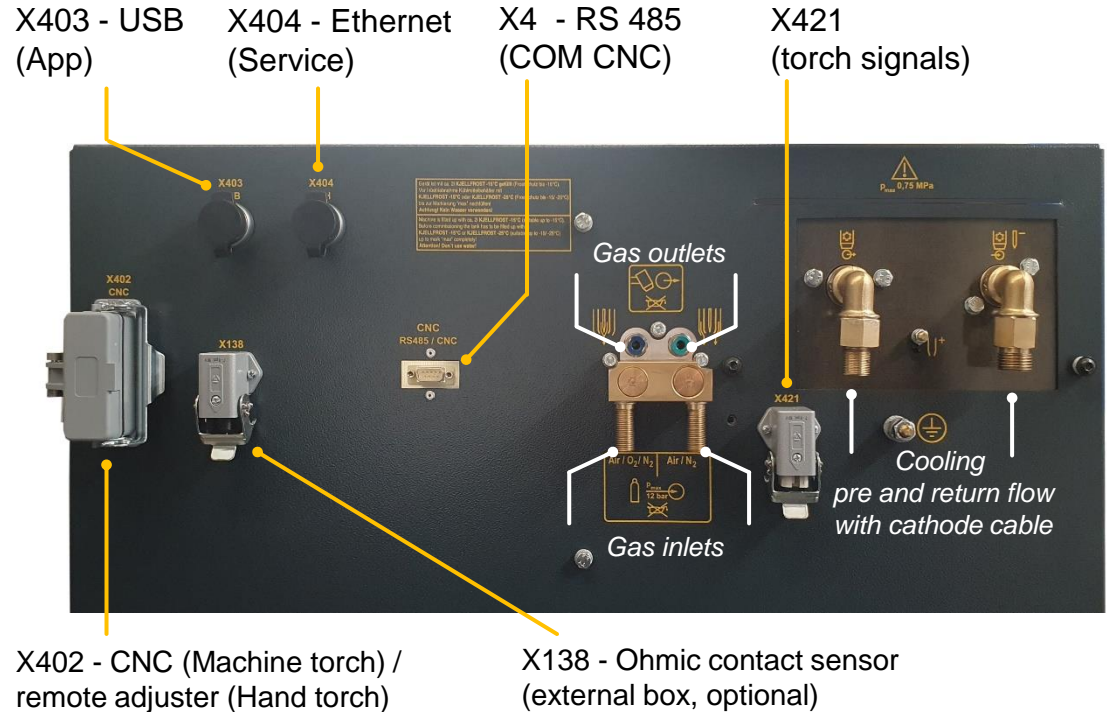
Technical Data

	K 200
Mains voltage	3~ 400 V 50 Hz
Max. connected load	52 kVA
Fuse, slow	80 A
Protection class	IP 21S
Cutting current (100 % DC)	60 - 200 A
Marking current (100 % DC)	35 A
Plasma gases	O ₂ , N ₂ , Air
Swirl gases	Air, N ₂
Marking gases	Air
Dimensions (L x W x H)	1078 x 684 x 1281 mm
Weight	351 kg



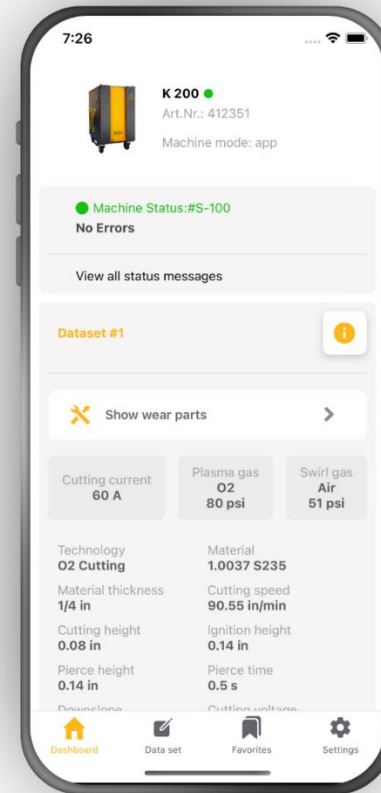
Interfaces and Modes

- Simplified CNC control via X403 (K-Desk App) and X402
- Full CNC control via X4 (RS 485) and X402
- Manual operation via X403 (K-Desk App) and X402 (remote adjuster)



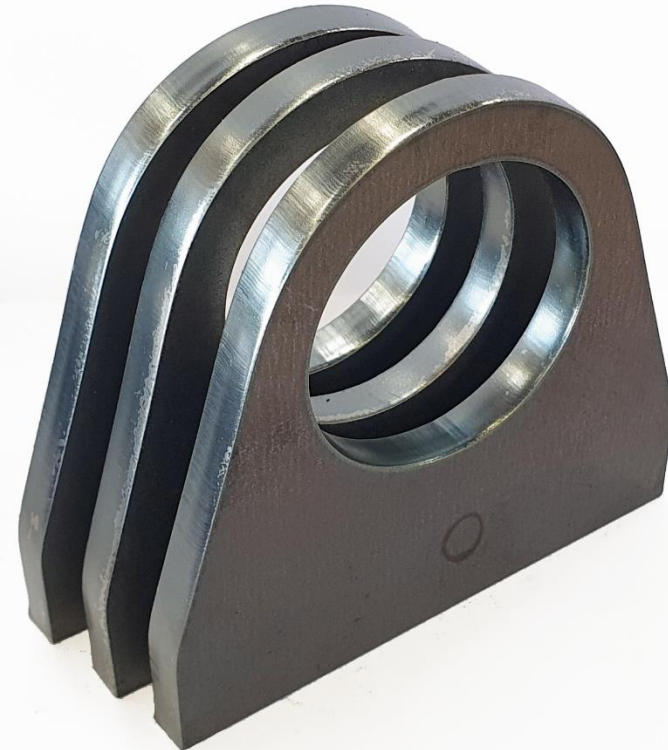
Mobil Device App K-Desk

- Intuitive, menu-guided user interface with a clearly display monitoring of all important data, parameters, and status of the system
- Selection and individual adjustment of cutting data
- Available on Google Play- und Apple App Store
- Connection via commercially available USB wireless stick or by cable



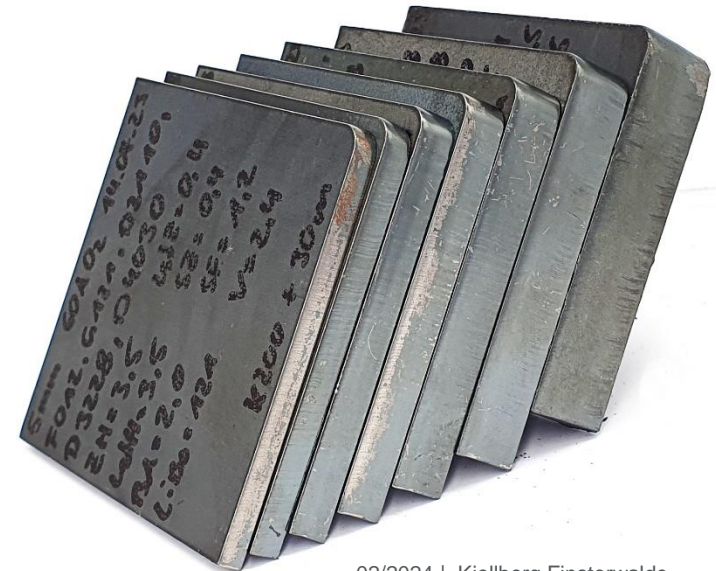
Application field

	O ₂ /Air	Air/Air	N ₂ /N ₂
Mild steel - maximum - Piercing	60 mm 30 mm	50 mm 30 mm	
Stainless steel and Aluminium - maximum - Piercing		50 mm 30 mm	40 mm 25 mm



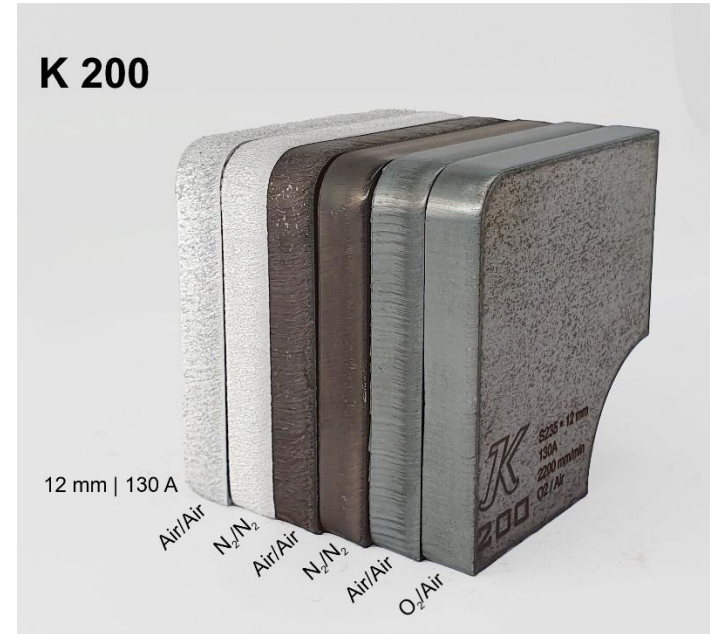
Cutting Range Mild Steel

Current Gas	Mild steel [mm]																
	1	2	3	4	5	6	8	10	12	15	20	25	30	35	40	50	60
60 A O ₂	█	█	█	█	█	█	█	█									
60 A Air	█	█	█	█	█	█	█	█									
130 A O ₂					█	█	█	█	█	█	█	█	█	█	█		
130 A Air					█	█	█	█	█	█	█	█	█	█	█		
200 A O ₂							█	█	█	█	█	█	█	█	█	█	█
200 A Air							█	█	█	█	█	█	█	█	█	█	



Cutting Range Stainless Steel and Aluminium

Current Gas	Stainless steel [mm]																
	1	2	3	4	5	6	8	10	12	15	20	25	30	35	40	50	60
60 A Air	■	■	■	■	■	■	■										
130 A Air						■	■	■	■	■	■	■	■	■			
130 A N ₂					■	■	■	■	■	■	■	■	■	■			
200 A Air				■	■	■	■	■	■	■	■	■	■	■	■	■	■
200 A N ₂				■	■	■	■	■	■	■	■	■	■	■	■	■	■
Current Gas	Aluminium [mm]																
	1	2	3	4	5	6	8	10	12	15	20	25	30	35	40	50	60
60 A Air	■	■	■	■	■	■	■										
130 A Air						■	■	■	■	■	■	■	■	■			
130 A N ₂					■	■	■	■	■	■	■	■	■	■			
200 A Air				■	■	■	■	■	■	■	■	■	■	■	■	■	■
200 A N ₂				■	■	■	■	■	■	■	■	■	■	■	■	■	■



User-friendly Plasma Cutting Unit

- RGB LED for state detection



*Cyan -
System Update*



*White - Init
White pulsating -
Service*



*Blue - Ready
Blue pulsating -
Standby*



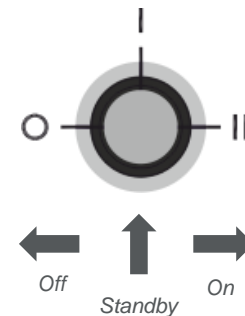
*Green -
Process on*



Yellow - Error

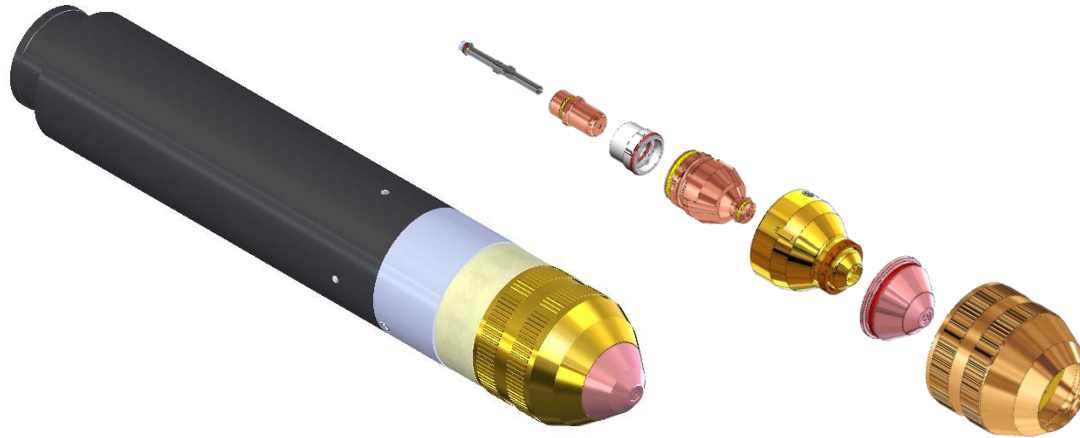


*Red pulsating -
Danger*



Machine Torch K-Torch

- Plasma torch without quick-change head with easily demountable torch shaft
- Available hose lengths: 10/15/20/25/30 m
- Consumables „D“



Change of K-Torch head

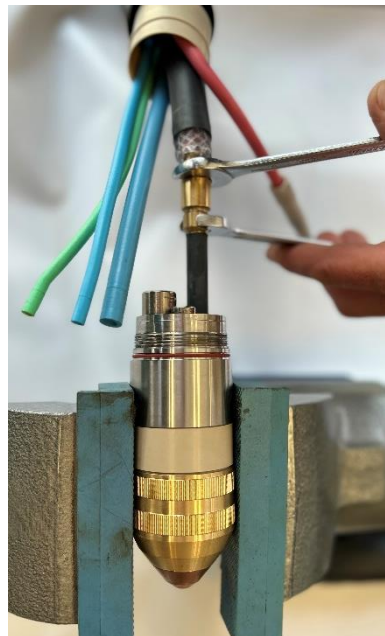
Easy mounting and dismounting of torch head



*Step 1: Loosen of fixing screws;
unscrew protection tube*



*Step 2: Put protection tube
rearwards over hose package*

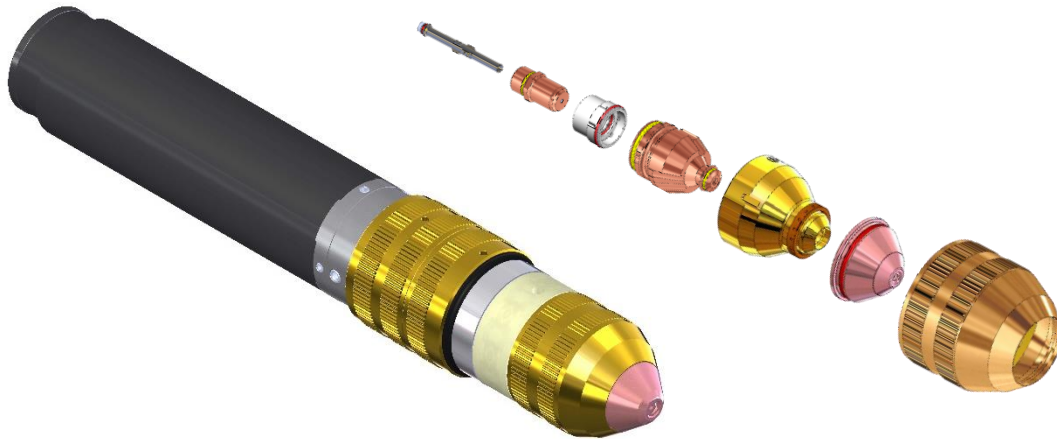


Step 3: Detach cables and hoses



Machine Torch: K-Torch QC (Quick Change)

- Plasma torch with quick-change head
- Available hose lengths: 10/15/20/25/30 m
- Consumables „D“



Hand Torch: K-Torch M

- Hand torch for manual cutting with plasma gas Air
- Gouging
- Available hose lengths: 6/10/15/20 m

